




Slide 1 - Slide 1

- How do I start HyperMesh? 
- Where are files saved? 
- The installation folder 

Altair India

Continue →

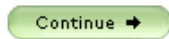
KFourMetrics

Slide 2 - Slide 2

When HyperWorks was installed on your computer, it probably created a shortcut on your Desktop. Double-clicking on the shortcut starts Hypermesh.

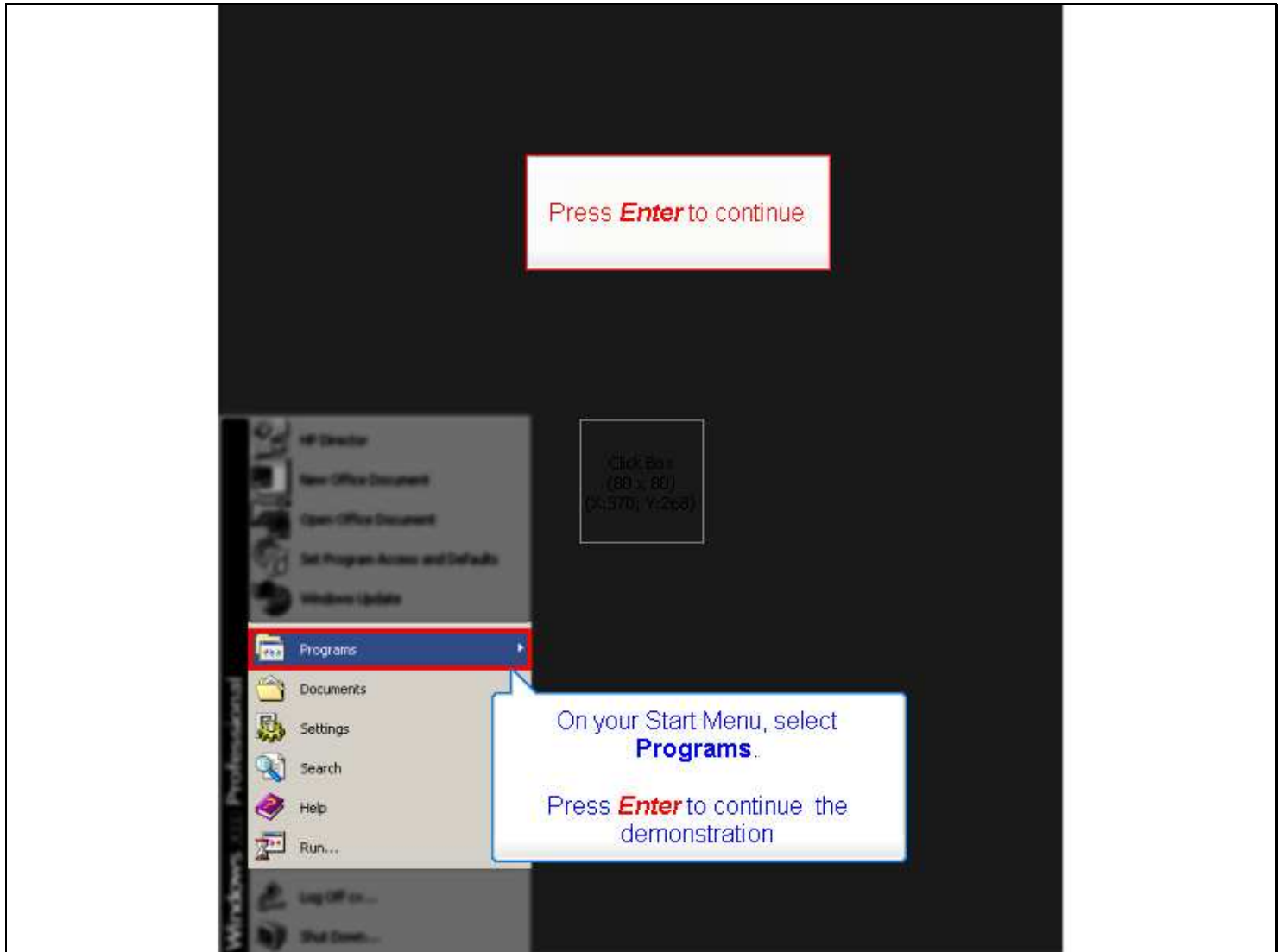
Press **Enter** to continue

In case you can't locate the shortcut, you should be able to start it using the Start / Programs menu, as shown in the demonstration. Click on the "continue" button at the bottom of the screen to start the demonstration.

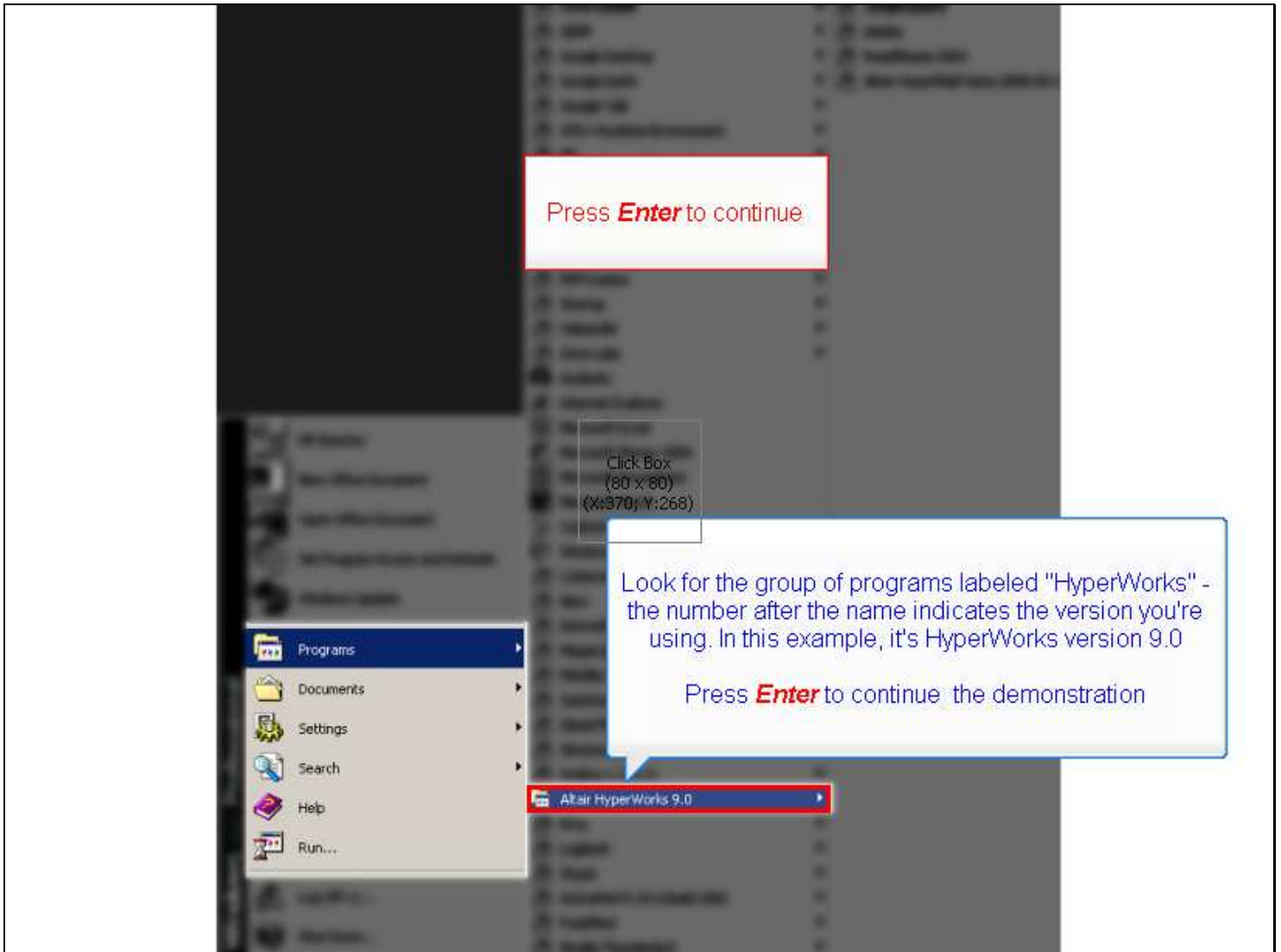


KFourMetrics

Slide 3 - Slide 3



Slide 4 - Slide 4




Most CAE applications generate multiple files - for instance, an FE analysis generates both text output and graphics output, usually stored in different files.



Press **Enter** to continue

It's a good practice to create a separate folder for each model you build, and to explicitly save your files there.



Click box
(80 x 80)
(1,370,10,660)

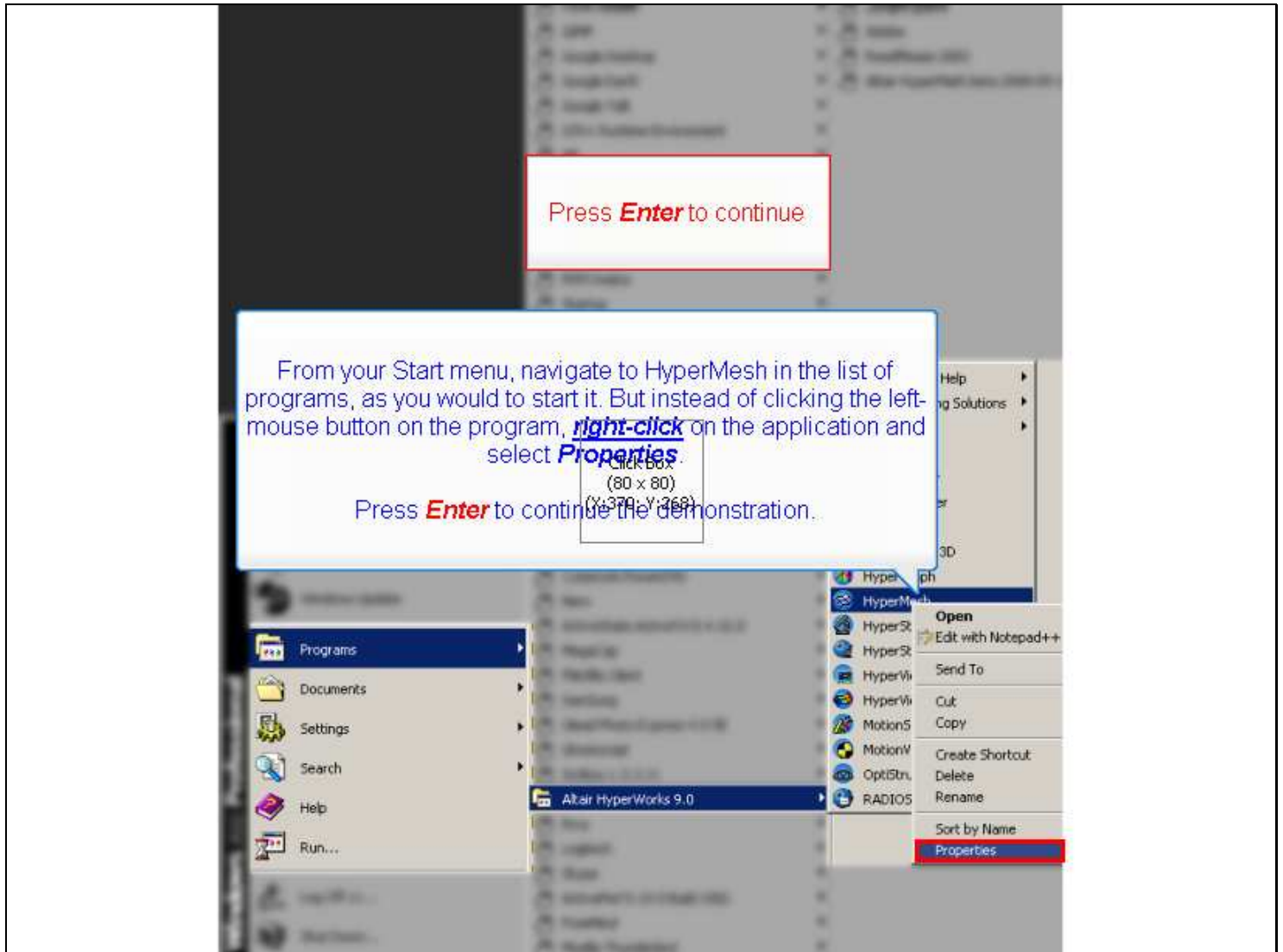
In case you do not specify a folder explicitly, where does HyperMesh save its files? Click on the "**continue**" button at the bottom of the screen to see how you can figure this out.



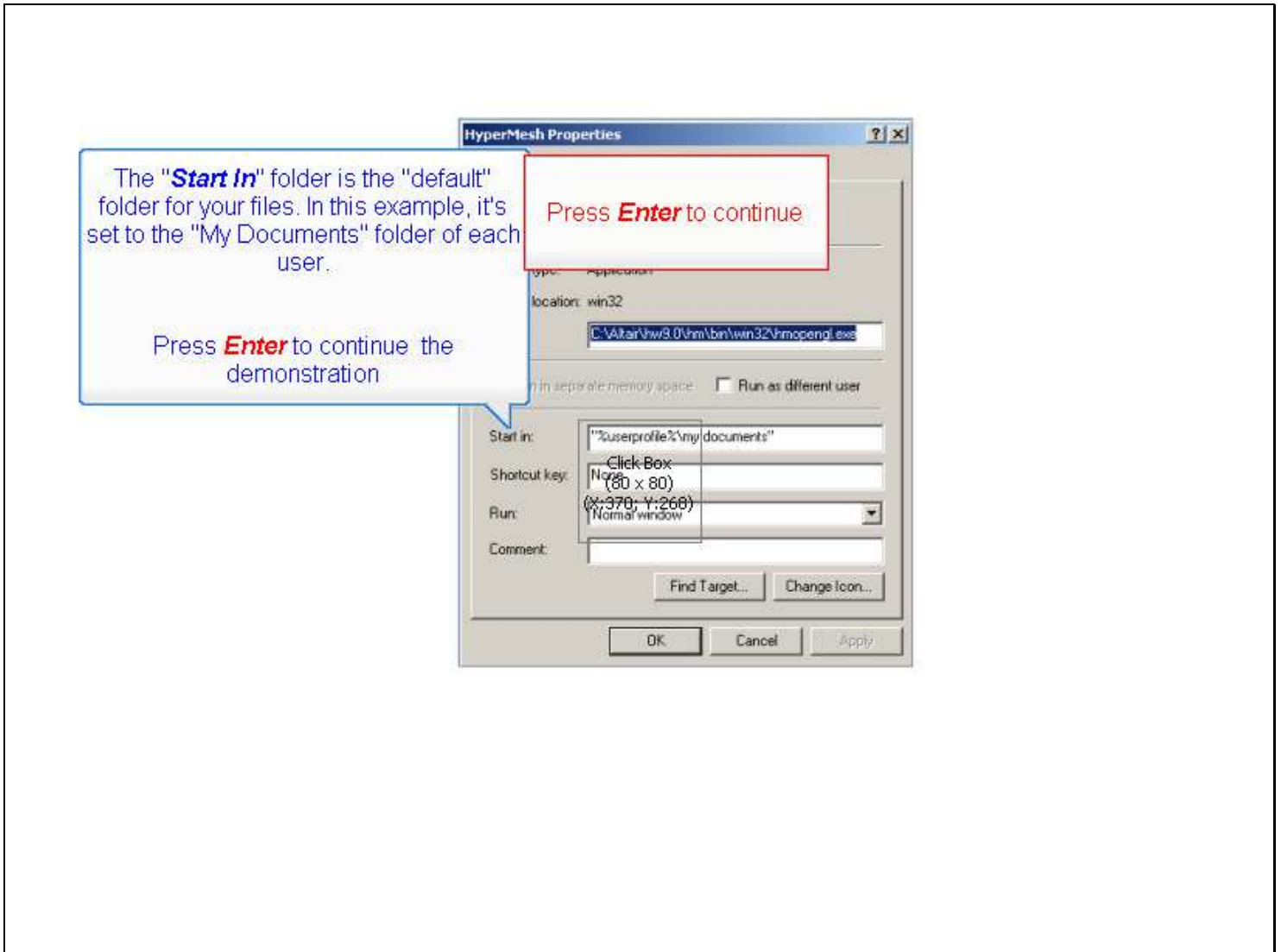
Continue →

KFourMetrics

Slide 7 - Slide 7



Slide 8 - Slide 8



Slide 9 - Slide 9

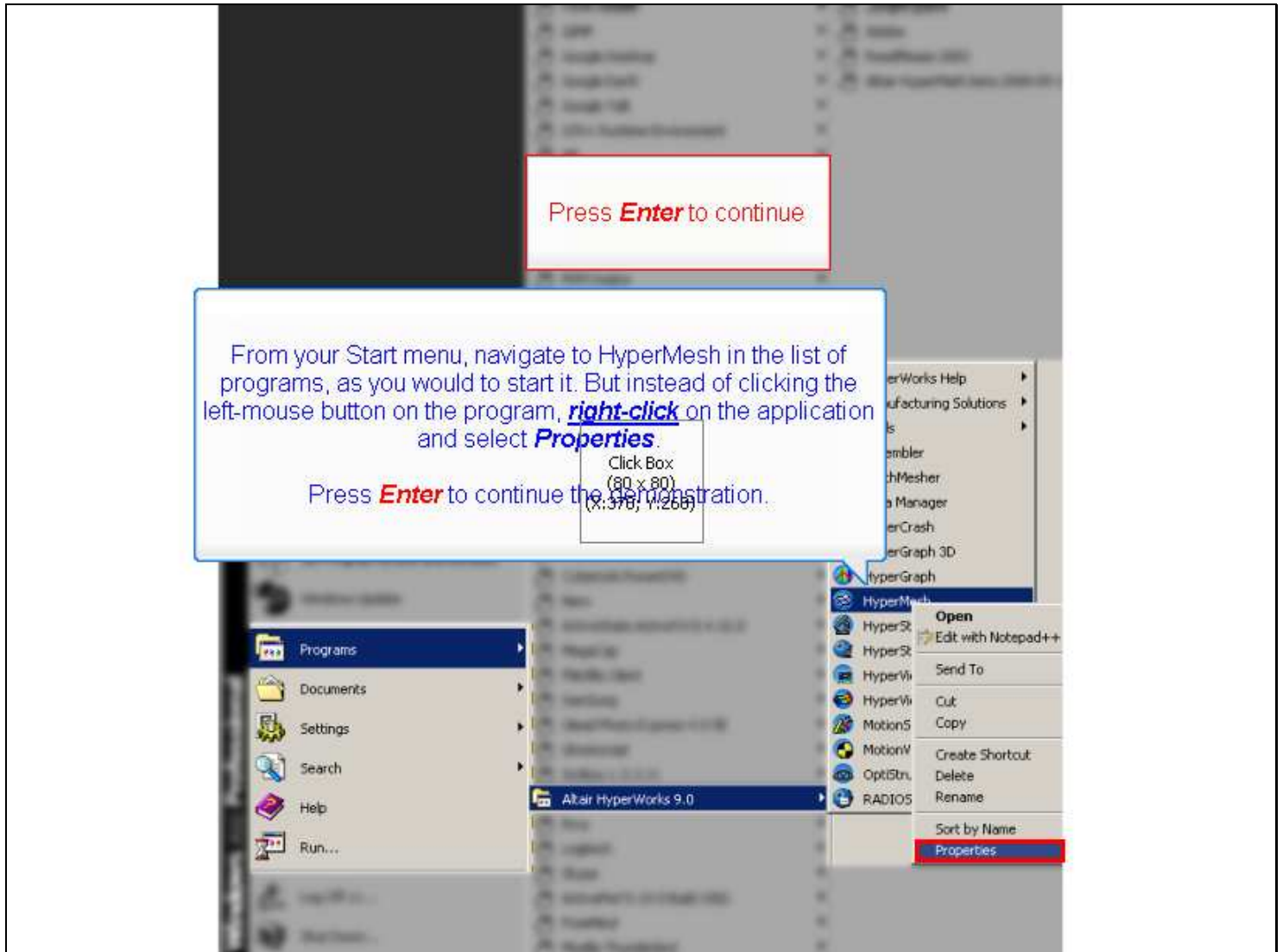
The on-line document s to your "installation folder" - f is where sample files used in the tutorials are located.

Click on the "continue" button at the bottom of the screen to learn how to figure out where HyperWorks is installed on your computer.

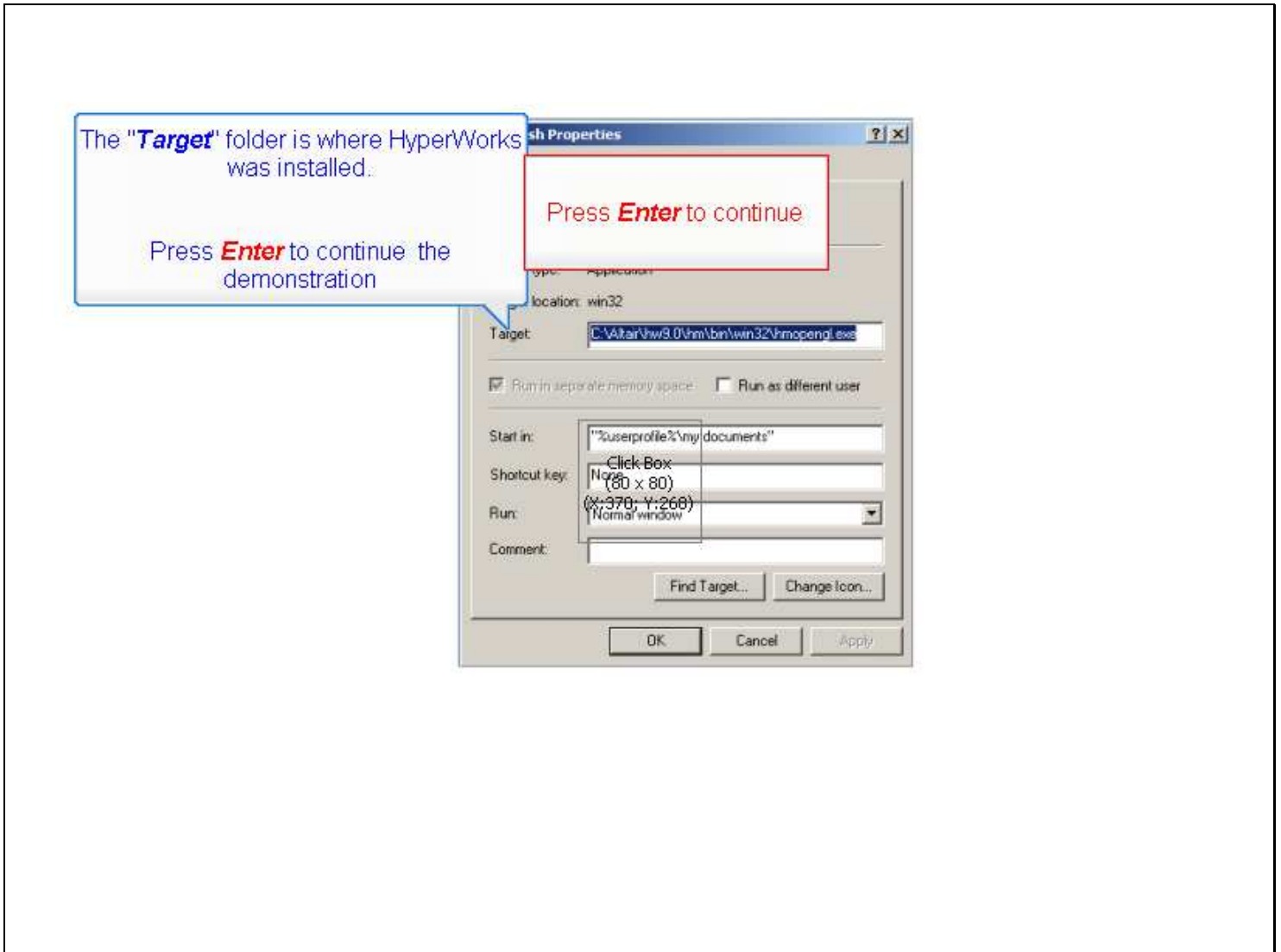
Continue →

KFourMetrics

Slide 10 - Slide 10



Slide 11 - Slide 11



Slide 12 - Slide 12

More tutorials



Browse the website



Exit

